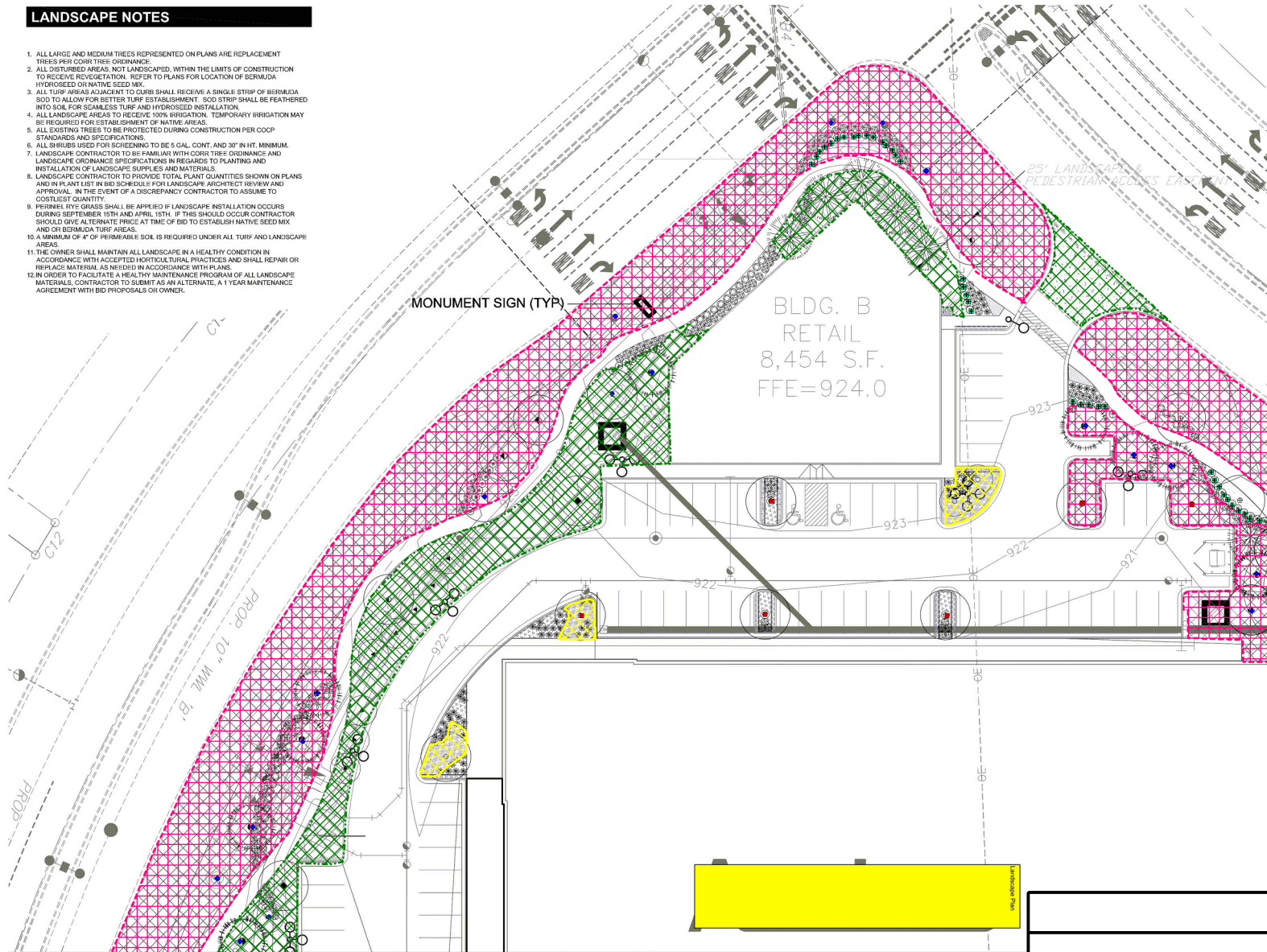


LANDSCAPE NOTES

1. ALL LARGE AND MEDIUM TREES REPRESENTED ON PLANS ARE REPLACEMENT TREES PER CORP TREE ORDINANCE.
2. ALL DISTURBED AREAS, NOT LANDSCAPED, WITHIN THE LIMITS OF CONSTRUCTION TO RECEIVE REVEGETATION. REFER TO PLANS FOR LOCATION OF BERMUDA HYDROSEED OR NATIVE SEED MIX.
3. ALL TURF AREAS ADJACENT TO CURBS SHALL RECEIVE A SINGLE STRIP OF BERMUDA SO2 TO ALLOW FOR BETTER TURF ESTABLISHMENT. SO2 STRIP SHALL BE FEATHERED INTO SOIL FOR SEAMLESS TURF AND HYDROSEED INSTALLATION.
4. ALL LANDSCAPE AREAS TO RECEIVE 100% IRRIGATION. TEMPORARY IRRIGATION MAY BE REQUIRED FOR ESTABLISHMENT OF NATIVE AREAS.
5. ALL EXISTING TREES TO BE PROTECTED DURING CONSTRUCTION PER COOP STANDARDS AND SPECIFICATIONS.
6. ALL SHRUBS USED FOR SCREENING TO BE 5 GAL. CONT. AND 30" IN HT. MINIMUM.
7. LANDSCAPE CONTRACTOR TO BE FAMILIAR WITH CORP TREE ORDINANCE AND LANDSCAPE ORDINANCE SPECIFICATIONS IN REGARDS TO PLANTING AND INSTALLATION OF LANDSCAPE SUPPLIES AND MATERIALS.
8. LANDSCAPE CONTRACTOR TO PROVIDE TOTAL PLANT QUANTITIES SHOWN ON PLANS AND IN PLANT LIST IN BID SCHEDULE FOR LANDSCAPE ARCHITECT REVIEW AND APPROVAL. IN THE EVENT OF A DISCREPANCY CONTRACTOR TO ASSUME TO COSTLEST QUANTITY.
9. PERENNIAL RYE GRASS SHALL BE APPLIED IF LANDSCAPE INSTALLATION OCCURS DURING SEPTEMBER 15TH AND APRIL 15TH. IF THIS SHOULD OCCUR CONTRACTOR SHOULD GIVE ALTERNATE PRICE AT TIME OF BID TO ESTABLISH NATIVE SEED MIX AND OR BERMUDA TURF AREAS.
10. A MINIMUM OF 4" OF PERMEABLE SOIL IS REQUIRED UNDER ALL TURF AND LANDSCAPE AREAS.
11. THE OWNER SHALL MAINTAIN ALL LANDSCAPE IN A HEALTHY CONDITION IN ACCORDANCE WITH ACCEPTED HORTICULTURAL PRACTICES AND SHALL REPAIR OR REPLACE MATERIAL AS NEEDED IN ACCORDANCE WITH P.L.A.N.E.
12. IN ORDER TO FACILITATE A HEALTHY MAINTENANCE PROGRAM OF ALL LANDSCAPE MATERIALS, CONTRACTOR TO SUBMIT AS AN ALTERNATE, A 1 YEAR MAINTENANCE AGREEMENT WITH BID PROPOSALS OR OWNER.



PLANT LEGEND

KEY	COMMON NAME
SHADE TREES	
☉	Arizona Cypress
☉	Bald Cypress
●	Bur Oak
□	Monterrey Oak
○	Red Oak - 3"
○	Red Oak - 4"
○	Red Oak - 6"
◆	Live Oak - 3"
◆	Live Oak - 4"
⊕	Cedar Elm - 3"
⊕	Cedar Elm - 4"
ORNAMENTAL TREES	
○	Tree Yaupon
○	Crape Myrtle
○	Wax Myrtle
○	Texas Mtn. Laurel
○	Lilac Chastle Tree
SHRUBS	
○	Contoneaster
●	Butterfly Iris
⊕	Primrose Jasmine
○	Dwarf Wax Myrtle
○	Upright Rosemary
○	Flameleaf Sumac
○	Evergreen Sumac
PERENNIALS	
⊕	Mexican Heather
⊕	New Gold Lantana
⊕	Trailing Lantana
⊕	Cherry (Autumn) Sage
⊕	Mexican Bush Salvia
ORNAMENTAL GRASSES	
○	Malden Grass
○	Dwarf Fountain Grass
○	Mexican Feather Grass
○	Gulf Coast Muhly
GROUNDCOVERS/VINES	
⊕	'Big Blue' Liriope
⊕	Coral Honeysuckle - Ⓞ
⊕	Prostrate Rosemary - Ⓞ
⊕	Mexican Potunia
TURF GRASS	
⊕	Bermuda
⊕	Crushed Granite
⊕	Hydromulch

Revisions

NO.	DATE	BY	REVISION
1	11/20/2017	CCCP	Review
2	12/21/17	Exp. Bluff	Comments

Legend

- Hydromulch - 21,653.66 sf
- Bermuda Grass - 8,281.64 sf
- Prostrate Rosemary - 752.82 sf
- Burr Oak Tree - 18 ea
- ⊕ Upright Rosemary - 37 ea
- ⊕ Cedar Elm Tree - 6 ea

1 LP-1

LANDSCAPE PLAN - AREA 1

MATCH LINE AREA 9 - SEE SHEET LP-5

This document was created with Win2PDF available at <http://www.win2pdf.com>.
The unregistered version of Win2PDF is for evaluation or non-commercial use only.
This page will not be added after purchasing Win2PDF.