

# Need to do Take-offs from CD's and downloaded Internet drawings?

## Generate Take-offs directly from your PC screen!

- ☑ SOFTakeoff™ will help you perform detailed quantity take-offs for paving, landscaping, concrete, framing, roofing, flooring, drywall, interiors and all other building trades except earthwork cut & fill.
- ☑ SOFTakeoff™ is fast, stable and time-tested. Thousands of customers rely on Roctek to cut costs, improve accuracy, save time, and win more bids!
- ☑ SOFTakeoff™ lets you export your quantities to Excel spreadsheets or any Windows-based estimating program.
- ☑ SOFTakeoff™ uses the latest technology to quickly import a wide variety of CD / CAD file formats and online downloads.

- Quick, accurate quantity take-offs from CD's and CAD files.
- No Digitizer to purchase or use — Go “paperless”!
- Works for all CSI Divisions 2—16, except Earthwork.
- Reads CD's, DXF, DWG, PDF, TIFF, JPEG, BMP file formats.
- Works with all scales: Ultra-accurate electronic calibration.
- Measures square & linear footage, volumes, counts.
- Detailed routines for Wood, Metal and Concrete walls.
- Detailed interior take-offs for Walls, Ceilings, and Floors.
- Structural take-offs; Slabs, Footings, Walls, Columns.
- Roof Plan take-offs: Multiple pitches for cut-up roofs.
- Direct export to Excel spreadsheets.

### Quick, Accurate Take-off Routines for:

- FRAMED AND CONCRETE WALLS.
- REFLECTED CEILING PLANS.
- FLOOR TILE LAY-OUT, ON-SCREEN.
- REBAR WEIGHTS.
- DRYWALL & INTERIOR QUANTITIES.
- ROOFS HIPS & VALLEYS.
- SLABS AND FOOTINGS.
- STRUCTURAL COLUMNS.
- QUICK COUNTS FOR DOORS, WINDOWS, COLUMNS, OUTLETS.

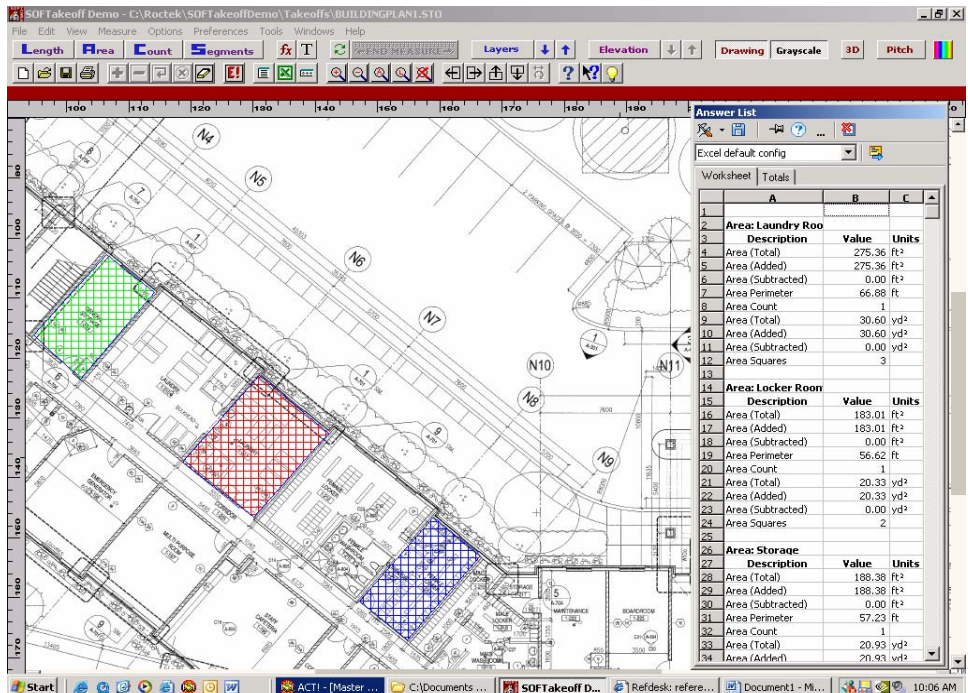
### Ask about our other programs:

“WinScale”: Architectural / Structural

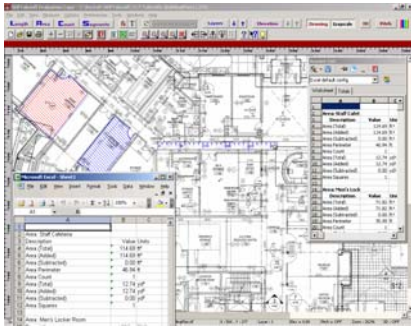
“WinEx”: Earthwork Cut & Fill

“WinEx Pro”: Advanced Earthwork

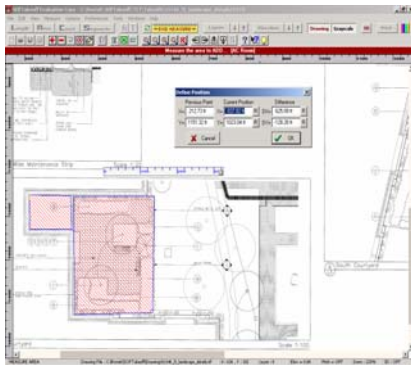
“PRESTTO”: Bargain-priced T/O.



Call us for a Live, on-your-screen demonstration  
in our “Web Showroom” at:  
[www.soltechs.com](http://www.soltechs.com)  
Toll-free: 1-800-731-3038




- **Reads CAD, PDF, BMP, TIFF, JPEG, and a host of other CAD and CD file formats.**
- **Roctek's exclusive "Measure Routines" will save you 50 to 90% in take-off time and give you colorized 3-D viewing.**
- **SMARTPlots™:** Our specialized editing functions give you complete control over each on-screen takeoff, for total accuracy with colorized displays to verify each item.



**Ask us about our programs for  
Architectural, Structural or  
Earthwork digitizer take-offs:**

- **"WinScale" - Architectural.**
- **"WinEx" - Earthwork.**
- **"WinEx Pro" - Dirt / Utilities.**
- **"PRESTTO" - Budget-priced.**

# SOFTakeoff™ Built-in Routines

Measure Routines	Description
 Length	The Length command allows you to measure the length of continuous line segments on the plans—straight or curved.
 Area	The Area command allows you to measure the enclosed area and perimeter length of regions on the plans.
 Count	The Count Units command allows you to quickly count the number of units of an item on the plans
 Separate Lengths	The Separate Lengths command allows you to quickly measure the total length of separate straight line segments on the plans
 Carpet	The Carpet command will calculate the length of carpet roll, perimeter, and area of carpet needed for different carpet sections
 Ceiling Tile	The Ceiling Tile command is used to calculate the number of ceiling tiles, runners, and spanners used in a given area
 Floor Tile	The Floor Tile command is used to calculate the number of floor tiles used in a given area.
 Floors	The Floor routine will calculate the number of joists, the beam lengths, and the areas of the different floor sections.
 Roofs, Hips, Valleys	The Roof routine will calculate the number of rafters, beam lengths, hip & valley lengths and the areas of the different roof sections
 Slabs	The Slab command will calculate the perimeter, area, and volume of the slab, the volume and weight of the bases beneath the slab, the number of rolls of vapor barrier and wire mesh, and the length and weight of rebar used in the slab.
 Framed Walls	The Framed Wall command is used to calculate the volume, surface area, length, number of studs, and the pieces of covering for a wall section.
 Concrete Walls	The Concrete Wall command is used to calculate the volume, surface area, wall length, length and weight of rebar, and the pieces of forming panels for a wall section.
 Rectangular & Circular Columns	The Rectangular or Circular Column command is used to calculate volumes, areas, and total length of vertical and hoop rebar used in a rectangular or Circular concrete columns
 Boxes, Rectangles and Cylinders	Command used to calculate the volume and areas for a box, rectangle or cylinder
 User Configured Formulas	This feature allows you to calculate more complex quantities than simple lengths, areas or counts. The formula feature is designed to allow you to apply an equation to a basic measurement and generate numerous answers based upon user entered variables