

“WinEx” The Cleanest Way To Bid Dirt!

Cut & Fill Takeoff for Site Work

WinEx™ and **WinEx Pro™**, provide the estimator the best possible excavation and grading takeoff software available. Since 1985, Roctek has taken the ideas and advice from over 6,000 of it's users to enhance our takeoff products and keep them on the cutting edge of takeoff technology.

WinEx™ is popular with GC's and big project management firms that want to do a quick dirt takeoff to get an idea of the scope of the project to check bids or put a number together in a hurry.

WinEx Pro™ is used by the companies actually moving the dirt who need a program that allows them to get a detailed grasp of the intricacies of a job and where there is money to be made or lost.

These programs were designed with one purpose in mind: To provide the estimator a takeoff tool to create an accurate takeoff in the least amount of time with the greatest accuracy, no matter what the topography.

Easy-to-use routines for:

- DXF “EXISTING & PROPOSED” DATA IMPORT AND MERGE PADS & TRENCHING
- VERTICAL / RETAINING WALLS
- SLOPES
- CONNECTED SPOT ELEVATIONS
- UNCHANGED REGIONS
- STRATA / SOIL BORING ANALYSIS
- SITE BALANCING
- TOPOGRAPHICAL CONTOUR LINES

- **WinScale:** Architectural / Structural
- **WinEx Earthwork:** Cut & Fill
- **WinEx Pro:** Advanced Earthwork
- **SOFTakeoff :** Electronic take-off from CD's and CAD files: no digitizer needed!

- Increased accuracy for Cut & Fill quantities, haul-offs and borrows.
- Up to 90% faster than manual takeoff methods!
- Easy to learn - You will be up and running in less than an hour.
- Export quantities to any Windows-based spreadsheet application.
- Multiple proposed layers for calculating volumes between phases of a project.

On-site Trenching

Subterranean Strata

Expert Support

Multiple Proposed Layers/Phases

Grid Staking Map Output

Strata Cut Maps

Tutorials included

Overlapping Report Regions

Custom Formula Generator

Spot Elevations

Flat Pads

Site and Region Balancing

Subgrade Material Library

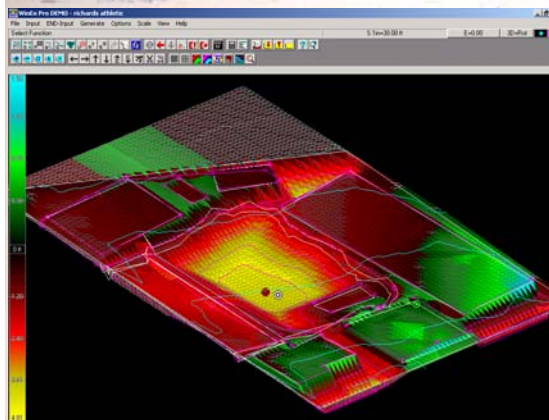
Slope Routines

Topographical Contour Lines

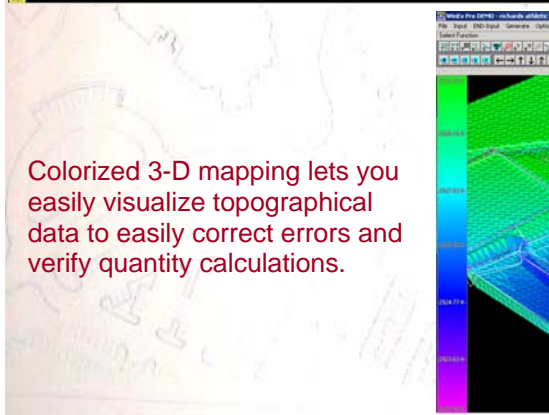
DXF “Proposed” & “Existing” data Import and Merge

User defined Grid density

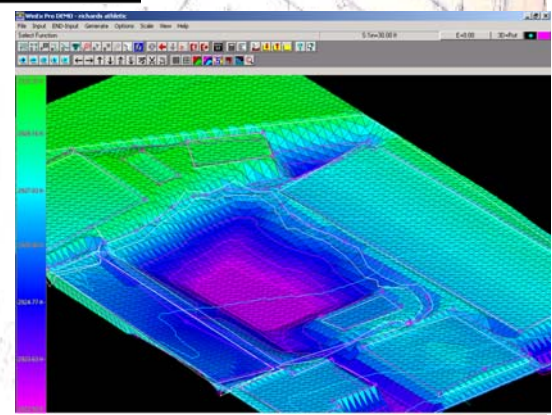
3-D Color Output



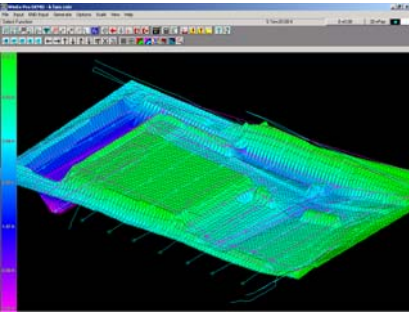
Professional presentation output includes formatted quantity reports for entire site and defined work regions, and color 3-D site representations with Cut & Fill mapping.



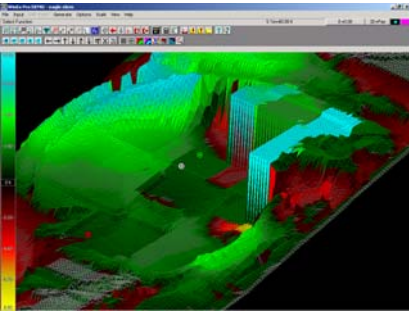
Colorized 3-D mapping lets you easily visualize topographical data to easily correct errors and verify quantity calculations.



WinEx
WinExPro



Color 3-D Site Maps



View Existing and Finished Color 3-D Topo Maps



Pre-formatted Reports on All Cut & Fill Quantities

- WinScale™

- WinEx™

- WinEx Pro™

- SOFTakeoff™

- PRESSTO™

ROCTEK INTERNATIONAL

(800) 731-3038

www.soltechs.com

Easy-to-use Sitework Takeoff Routines

| Measure Routines | Description |
|--------------------------|---|
| Topo Lines | The Topo Lines feature is designed for entering contours from the plans. You may enter existing or proposed (final) contours. |
| Connected Spots | The Connected Spots feature is designed for entering spot elevations from the plans. |
| Flat Pad | The Flat Pad input allows you to specify any area as being at a fixed elevation. This is useful for building pads and other areas, particularly when these areas are adjacent to one another. |
| Strata | Input core samples directly from the engineers notes to accurately determine where and how much cut of different strata layers you will encounter on your job. |
| Slopes | A slope region consists of two parts: a slope base and a slope boundary. A "Cut Slope" will generate cut only (will daylight when proposed gets to existing). A "Fill Slope" will generate fill only. A "Simple Slope" will generate a sloped plane throughout the region. |
| Trench | The Trench function is used to quickly and accurately calculate the amount of excavation and materials needed to lay pipe, footings, or other items that require a trench. you can either create a trench template, select a predefined template, or modify a predefined template. Choose a predefined template from the Trench Name pull-down, or enter a name for a new trench. Then, modify any of the parameters to match your trench layout: hinge height, slope, bench width, and bottom width. |
| Vertical Wall | The Wall feature is designed for entering shear elevation changes from the plans, such as cliffs or retaining walls. |
| Unchanged Region | The Unchanged Region feature is designed for specifying areas to remain undisturbed on the site. |
| Work Region | The Work Region feature is designed to allow the user to identify unique characteristics for any area on the site. In addition, individual cut/fill and area calculations are available for any work region defined. |
| Grid Staking Map | The Grid Staking Map button toggles on or off the grid staking map over the input information |
| Cross Section Slice | The View Cross-Section speed button generates a two-point cross-section anywhere on site. This is a fast method of viewing sections; simply touch the left and then the right edge of the cross-section to view. |
| Strata Map | The View Strata Map button will display a multicolored map depicting which Strata Layer the Proposed (Final) Layer is in. |
| Elevation Shading | The View Elevation Shading button will display a multicolored shaded map using different shades to represent elevations on the existing or proposed surface |
| User Configured Formulas | This feature allows you to calculate more complex quantities than simple lengths, areas or counts. The formula feature is designed to allow you to apply an equation to a basic measurement and generate numerous answers based upon user entered variables |

Solution Technologies, Inc.

5733 Richardson Mews Square

Relay, MD. 21227 Toll-free: (800) 731-3038